

## CONFIGURATION

Overhead Guard	Combination Instrument
Top Rain Shelter	Working Hour Meter
Pedal Rubber	Oil Content Meter
Semi-suspension Seat	Water-thermometer
Automatic Shift	Charging Indicator
Electro-hydraulic Reversing	Neutral Position Switch
Wide Field Mast (2 Stage)	Oil Pressure Warning
Backrest	Electric Horn
Standard Forks	LED Signal Lamp
Adjustable Steering Column	Reversing Buzzer
Lifting and Tilting Joysticks	Key Shutoff Device
Two Piece Multiplex Valve	Push-button Parking brake
Full-hydraulic Power Steering	Torque Converter Oil Gauge
Tilting Cylinder Latching Valve	Traction Pin
Transmission Oil Filter	Tool Box
Power Master Switch	

## OPTIONAL

Solid Tires	Driving OPS
Cabin	Full Set OPS (Including drive and lift)
Working Warning Light	Torque Converter Oil Temperature Alarm
Suspension Seat	Full Set LED Lamps
Warm-air Blower	Reversing Voice Horn
Front Windscreen	Overspeed Alarm, 10km/h
Rear Working Lamp	Electric Fan
High Level Exhaust	Sound-light Alarm
Double Air Filter	Lengthen Fork Jacket
Oil Bath Air Filter	Tilting Cylinder Sleeve
Fire Extinguishing Muffler	Steering Cylinder Sleeve
Widen Fork Frame	Custom Colors
Multiple Work Attachments	

## PRODUCT FEATURES

Good Heat Dissipation Cooling system is reasonable optimized, which improves cooling performance significantly. Thus improving reliability and durability of key components such as gearbox and engine.
Lowering Energy Consumption Optimized design of load sensing hydraulic system reduces vehicle fuel consumption effectively.
Operating Comfort Adopted interactive ergonomic design to improve operating comfort. Equipped with wide field of view mast to improve driver's field of view.
Intelligent Reversing Electro-hydraulic Reversing System. Easy to operate and labor-saving. Upgrade new intelligent shift system, prevent the second gear starting, ensure reliability of gearbox.
Convenient Maintenance Interior space of car body is more spacious. Parts Positions are more reasonable. Opening angle of hood is increased to 80°. Maintainability of machine is better.
High Reliability Strength of the core structural parts of car body, mast and hood has been enhanced greatly to make whole vehicle more solid.

LG75DTIII



LG75DTG (Stone)



The following blank can be used for notes or comments.

**For more information on Lonking products,  
Please contact our local agent:**

# LONGKING 龙工

# LG75DT

BALANCEWEIGHT TYPE FORKLIFT TRUCK WITH ENGINE

Efficiency Rules the Future



LONGKING (FU JIAN) INTERNATIONAL TRADE CO., LTD.

**LONGKING HOLDINGS LIMITED**

Add: 26 Minyi Road, Xinqiao, Songjiang Industrial Zone, Shanghai

Tel: +86-21-3760 2242 E-mail: export@lonking.cn

<http://www.lonkinggroup.com>

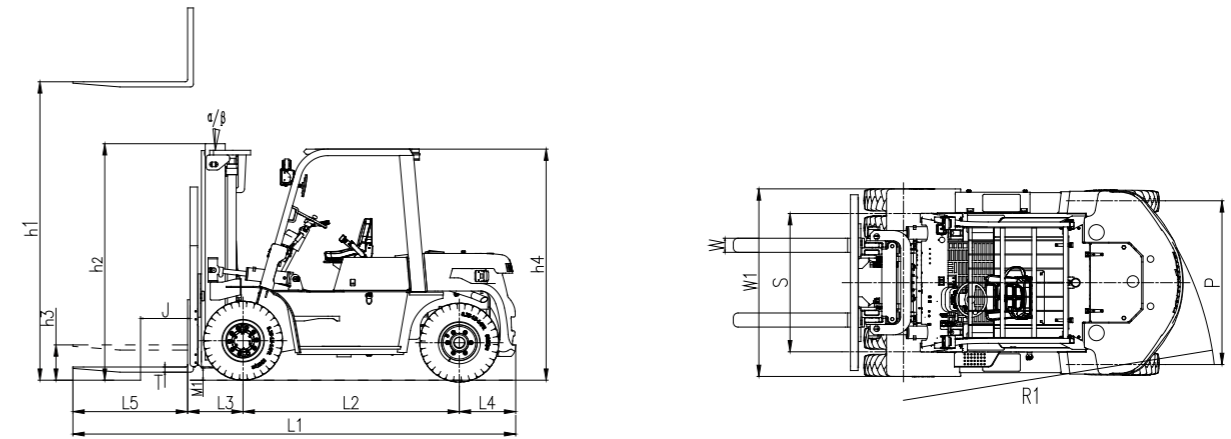
	LG75DTIII	LG75DTG
Rated Capacity (kg)	7500	7500
Load Center (mm)	600	600
Power Type	Diesel	Diesel

## OVERALL SPECIFICATIONS

Type	No.	Item	Code	Unit	Data
Identification	1.01	Manufacturer			LONKING
	1.02	Model			LG75DT III   LG75DTG(Stone)
	1.03	Power type			Diesel
	1.04	Rated capacity	Q	kg	7500
	1.05	Load center	J	mm	600
Dimensions	2.01	STD Max height (with backrest)		mm	4430
	2.02	STD Max lifting height	h1	mm	3000
	2.03	Overhead guard height	h4	mm	2510
	2.04	Overall length (with fork)	L1	mm	5025   5175
	2.05	Wheelbase	L2	mm	2250
	2.06	Front overhang	L3	mm	655
	2.07	Rear overhang	L4	mm	900
	2.08	Min.ground clearance (Frame/Mast)	m1/m2	mm	300/270
	2.09	Overall width	W1	mm	1995
	2.10	Adjusting range of fork (outside)		mm	300-1805   650-1220
	2.11	STD Fork size (L5*W*T)		mm	70×1220×150   70×1370×150
	2.12	Front wheel tread	S	mm	1470
	2.13	Rear wheel tread	P	mm	1500
	2.14	Min.turning radius	R1	mm	3460
	2.15	Min aisle width for pallet 1000×1200,crossways		mm	5535   5685
	2.16	Min aisle width for pallet 800×1200,lengthways		mm	5535   5685
Tires	3.01	Wheels number, front/rear (X=driven wheels)			X=4/2
	3.02	Tires type			Pneumatic
	3.03	Tires size, front			8.25-20-14PR
	3.04	Tires size, rear			8.25-15-14PR
Other Details	4.01	Max.traveling speed, loaded/unloaded		km/h	24/29
	4.02	Max.lifting speed, loaded/unloaded		mm/s	480/510
	4.03	Lowering speed, loaded/unloaded		mm/s	410/390
	4.04	Max.traction, loaded		KN	62
	4.05	Max.gradient, loaded/unloaded		%	25/20
	4.06	STD operating weight (with oil & water)		kg	10330
	4.07	Axles loading,front/rear (loaded)		kg	15730/2100
	4.08	Axles loading,front/rear (unloaded)		kg	4130/6200
	4.09	Service brake			Power brake-pedal
	4.10	Parking brake			Mechanical-hand brake lever
	4.11	Drive type			Automatic
	4.12	Number of gear (front/rear)			2/2
	4.13	Fuel tank capacity		L	140
	4.14	Battery votage/capacity		V/Ah	2×12/90

## ENGINE OPTIONAL

Engine Model	Emission	Manufacturer	Rated Power	Max.Torque (N.m/rpm)	Bore/Cylinders Number/Displacement	Fuel Consumption
CA6110/125G5-LG20	CHN II	XICHA	83kW/2000rpm	450/1400-1500	110/6/7.127L	230g/kW.h
YC4A125-T300	CHN III	YUCHAI	92kW/2200rpm	480/1600-1800	108/4/4.837L	225g/kW.h



## MAST SPECIFICATIONS

### 2 Stage Standard Mast-Super Wide Field

Mast Model	h1 Max Lifting Height(mm)	Load Capacity (J=600mm) (kg)	h2 Lowered Mast Height (mm)	h3 Free Lifting Height, without backrest (mm)	Mast tilt $\alpha/\beta$ (°)	
					LG75DTIII	LG75DTG
M250	2500	7500	2320	216	11/11	11/11
M270	2700	7500	2420	216	11/11	11/11
<b>M300</b>	<b>3000</b>	<b>7500</b>	<b>2570</b>	<b>216</b>	<b>11/11</b>	<b>11/11</b>
M330	3300	7500	2720	216	11/11	11/11
M350	3500	7500	2820	216	11/11	11/11
M400	4000	7500	3120	216	11/11	11/11
M425	4250	7500	3245	216	6/6	6/6
M450	4500	7500	3370	216	6/6	6/6
M500	5000	7500	3620	216	6/6	6/6
M550	5500	7000	3920	216	6/6	6/6
M600	6000	6700	4170	216	6/6	6/6

### 3 Stage Free Mast-Super Free Lifting Height

Mast Model	h1 Max Lifting Height(mm)	Load Capacity (J=600mm) (kg)	h2 Lowered Mast Height (mm)	h3 Free Lifting Height, without backrest (mm)	Mast tilt $\alpha/\beta$ (°)	
					LG75DTIII	LG75DTG
ZSM320	3200	6700	2275	1146	11/11	11/11
ZSM360	3600	6700	2405	1276	11/11	11/11
ZSM400	4000	6700	2535	1406	11/11	11/11
ZSM435	4350	6700	2655	1526	6/6	6/6
<b>ZSM450</b>	<b>4500</b>	<b>6700</b>	<b>2705</b>	<b>1576</b>	<b>6/6</b>	<b>6/6</b>
ZSM480	4800	6700	2805	1676	6/6	6/6
ZSM500	5000	6700	2875	1746	6/6	6/6
ZSM540	5400	6200	3060	1931	6/6	6/6
ZSM600	6000	5800	3260	2131	6/6	6/6
ZSM630	6300	5300	3360	2231	6/6	6/6
ZSM650	6500	4800	3425	2296	6/6	6/6

Note:With backrest, free lifting height reduces 243mm.